

#BackGP

The NHS Long Term Plan



General Practice is the frontline of the NHS for millions of patients, carrying out the vast majority of patient contact and playing a crucial role alleviating pressures in other parts of the health service, including hospital emergency departments.

As plans are developed for the extra funding announced by the Prime Minister for the NHS in England, it is essential that we do more to prevent ill-health and support the growing number of patients with long term, complex conditions to live well in the community.

To do this, we need to invest in the expansion and modernising of General Practice and community health services, to provide patients with better access to more services, closer to home.

Investing in General Practice is investing in the entire NHS. It is an investment in patient care. The Long-Term Plan must set out a clear commitment to restore the level of spending on General Practice from 9% to 11% of the NHS budget.



Royal College of
General Practitioners

www.rcgp.org.uk

 @rcgp  @royalcollegeofgps  rcgp.org

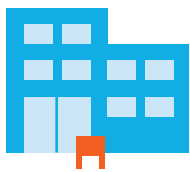
#BackGP

11% investment
would enable patients
and GPs to have:



New roles in general practice

There will be a wider range of different healthcare professionals providing care to patients in General Practice alongside the GP – for example nurses, physiotherapists, paramedics, mental health therapists and practice-based pharmacists.



Support for practices

Practices working together will offer a wider range of services to patients in modernised, fit-for-purpose surgeries. Surgeries will become hubs where 'social prescribing' enables patients to access community activities and advice services to support their wellbeing.



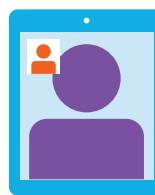
Training and workforce development

The size of the GP workforce will increase. More healthcare professionals will choose General Practice as a career, supported by better funded training placements. Current staff will receive better career support and continuous professional development.



Time to care

Both GPs and patients tell us that a 10-minute appointment is frequently too short. With larger teams and more support, GPs will be able to provide patients with longer consultations.



Digitally enabled care

Video consultations will become a standard part of GP care. Improved IT systems will help save time for GPs and patients and enable better, more joined up services.