



Royal College of
General Practitioners

Communicable and Respiratory Disease Report for England & Wales

Key Statistics:

Week Number/Year.....	50/2008
Week Starting – Ending.....	08/12/08-14/12/08
No. of Practices.....	83
No. of Doctors.....	428
Population.....	819350

Key Messages:

National (England & Wales)

- **Acute Bronchitis:** increased from **151.0** in week 49 to **173.6** in week 50.
- **Common Cold:** increased from **250.7** in week 49 to **324.8** in week 50.
- **Influenza-like Illness:** increased from **27.5** in week 49 to **39.5** in week 50.
- **Respiratory Symptom Diseases:** increased from **607.7** in week 49 to **728.5** in week 50.

Regional (North, Central and South)

- **Acute Bronchitis:** increased in the North from **151.2** in week 49 to **178.0** in week 50, increased in the Central region from **163.1** in week 49 to **183.0** in week 50 and increased in the South from **141.7** in week 49 to **164.6** in week 50.
- **Common Cold:** increased in the North from **222.6** in week 49 to **322.1** in week 50, increased in the Central region from **235.9** in week 49 to **326.3** in week 50 and increased in the South from **273.1** in week 49 to **324.7** in week 50.
- **Influenza-Like Illness:** increased in the North from **15.1** in week 49 to **16.4** in week 50, increased in the Central region from **37.9** in week 49 to **56.0** in week 50 and increased in the South from **24.3** in week 49 to **36.4** in week 50.
- **Respiratory Symptom Diseases:** increased in the North from **549.8** in week 49 to **673.6** in week 50, increased in the Central region from **634.5** in week 49 to **775.8** in week 50 and increased in the South from **609.8** in week 49 to **714.8** in week 50.

Comments:

There has been a further increase in the incidence of ILI again mainly in the Central and Southern regions. The maximum impact is in the 15-44 years age group. Incidences in all the common respiratory diagnoses have increased by 15 to 20% across all age groups and all regions.

Autumn/Winter Focus 2008:

During the winter (weeks 40 to 20) a special focus on influenza-like illness and acute bronchitis is provided below. Each weekly incidence rate is presented per 100,000 population. All presentations are for males and females in all age groups unless otherwise stated.

Weekly influenza and influenza-like illness incidence rates per 100,000 persons

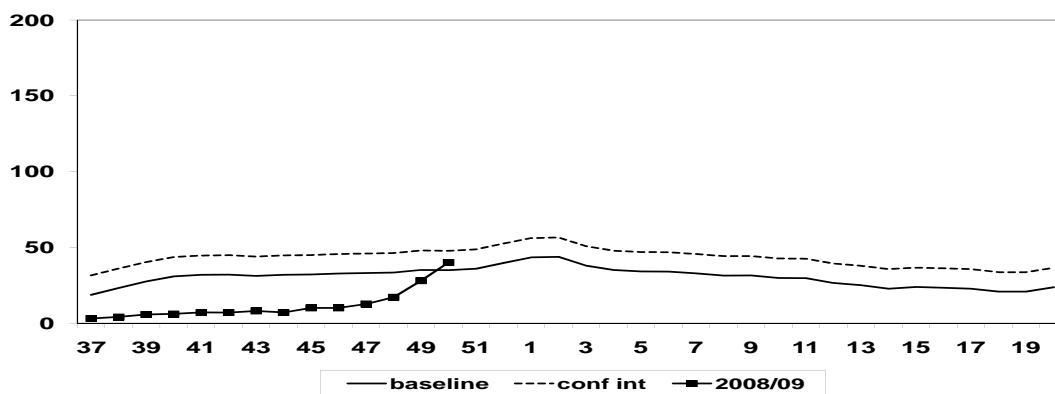
All Regions

	Influenza-like illness	Bronchitis
0-4	35.52	378.23
5-14	30.42	98.59
15-44	54.36	100.95
45-64	34.25	182.50
65+	17.95	327.70
All Ages	39.54	173.55

Regional

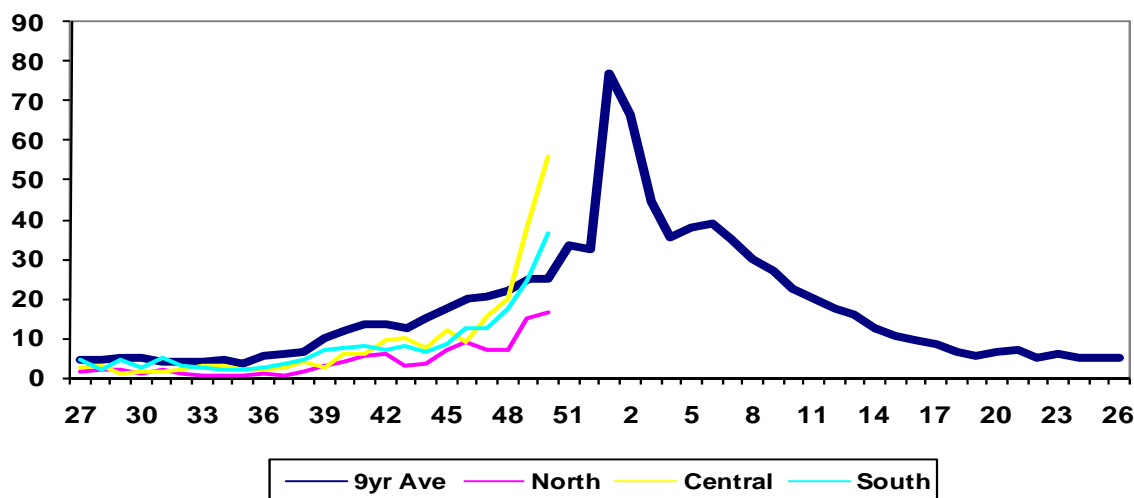
North	16.36
Central	56.01
South	36.40

(A) Influenza-like illness: national incidence rate*

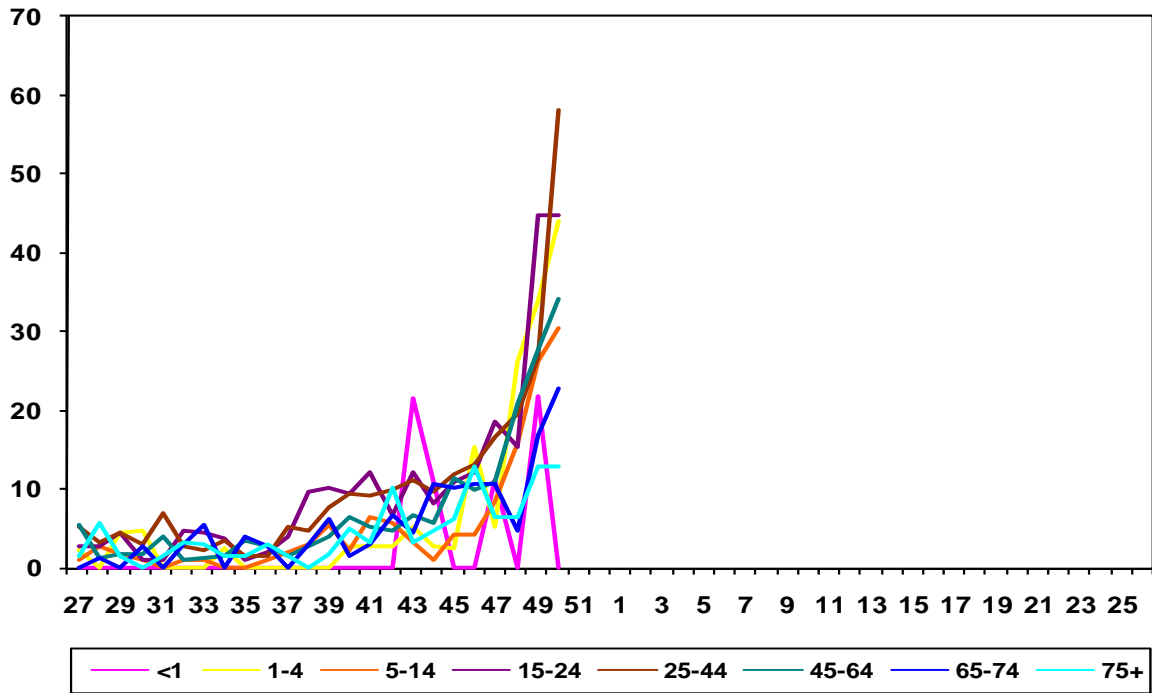


*The incidence rate is plotted against a background of the average influenza incidence during periods when influenza has not been prevalent over the last ten winters. The baseline is presented as a moving average with an upper limit of 2 standard deviations above. Incidence data for the winter of 2007/08 are superimposed. Rates less than 30 are commonplace in winter; between 30 and 100 are usual when influenza viruses are circulating; rates exceeding 100 represent above average influenza activity and above 200 are exceptional.

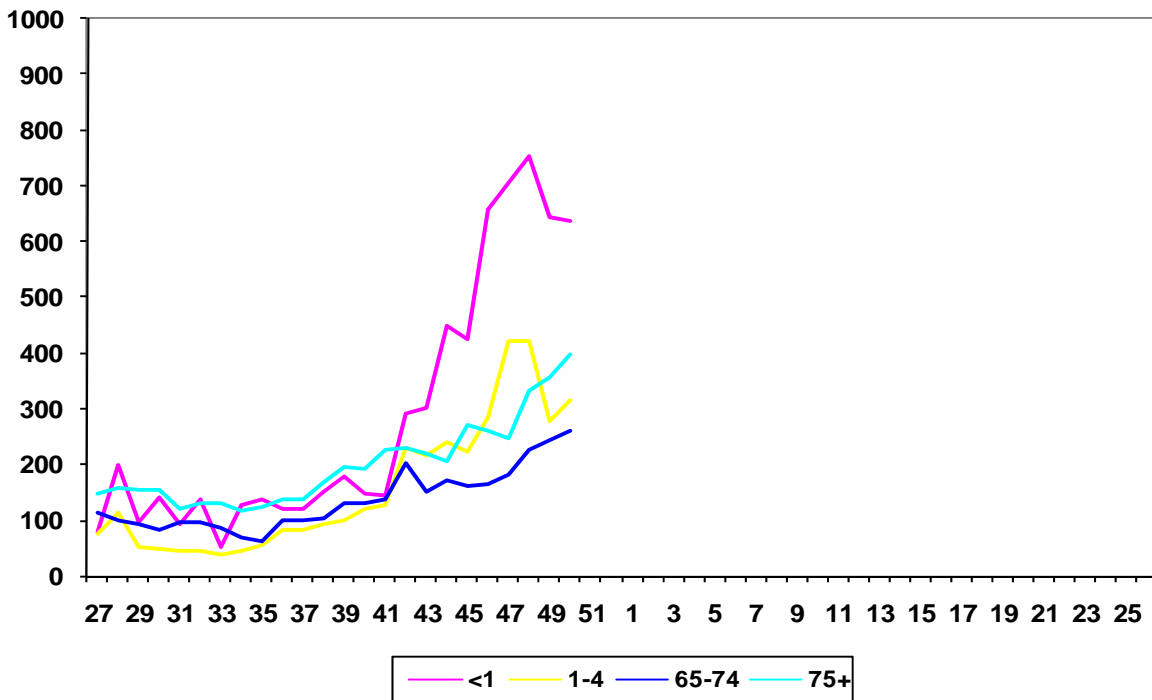
(B) Influenza-like illness: regional incidence rates 2008/09 against a 9 year average (1999-2007)



(C) Influenza-like illness: national incidence 2008/09 by age group

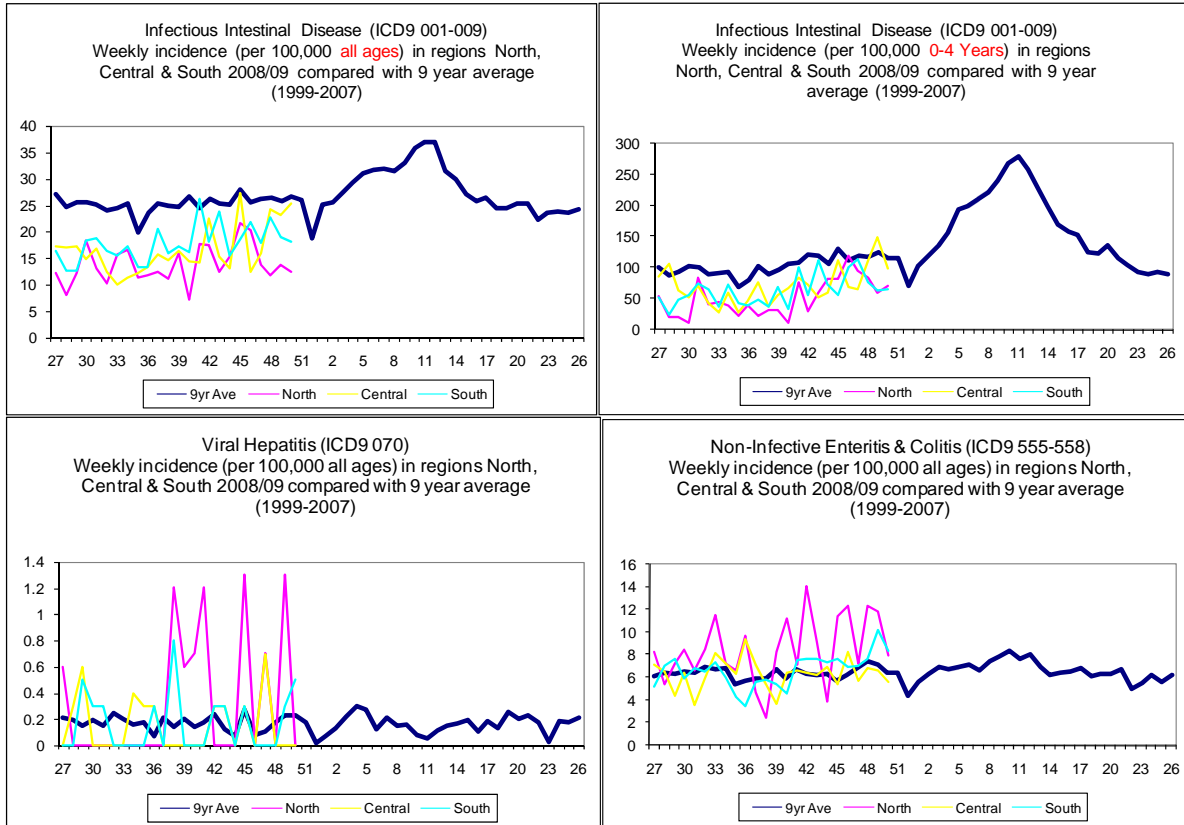


(D) Acute Bronchitis: national incidence 2008/09 in the young and elderly populations

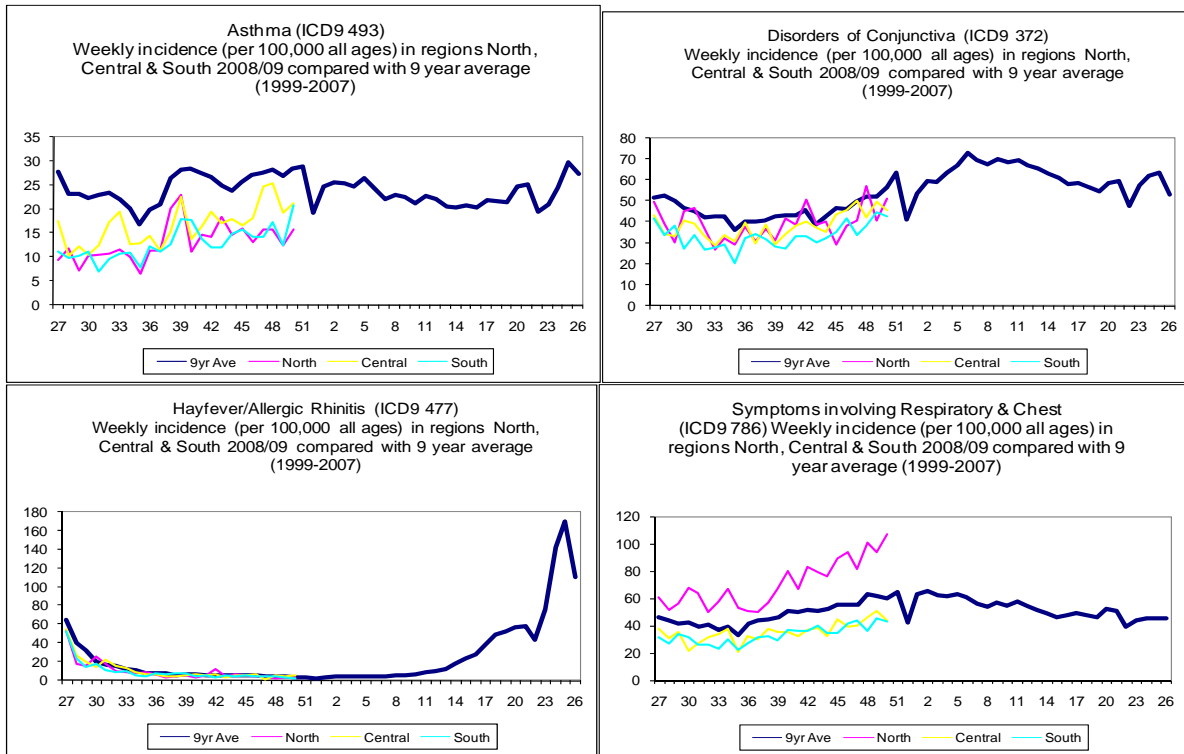


Weekly incidence data collected in the WRS (Weekly Returns Service) are presented for each disease set against the background National weekly average over the previous 9 years (1999-2007). Data are available for 3 supra-regional groupings; North, Central and South. All presentations are for males and females in all age groups unless otherwise stated.

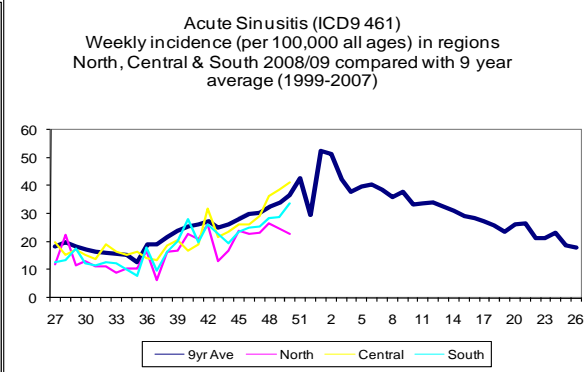
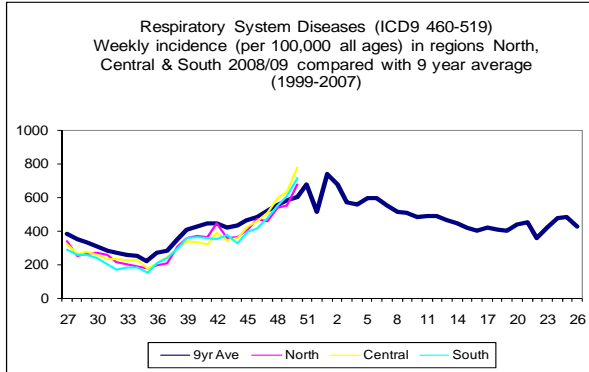
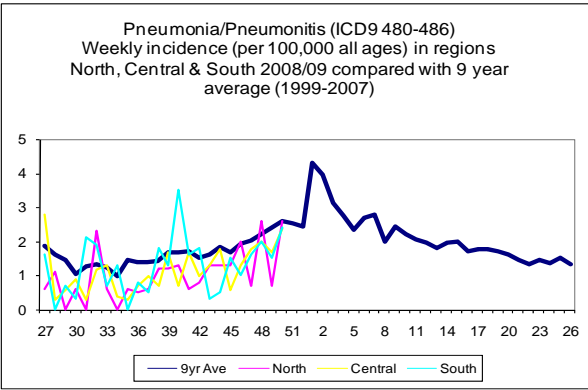
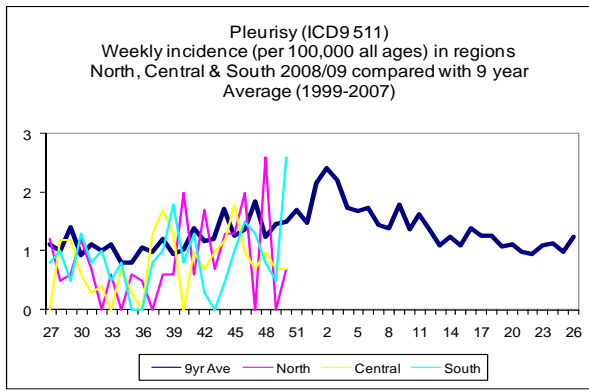
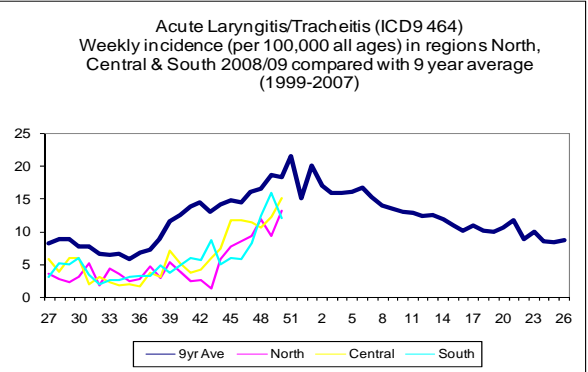
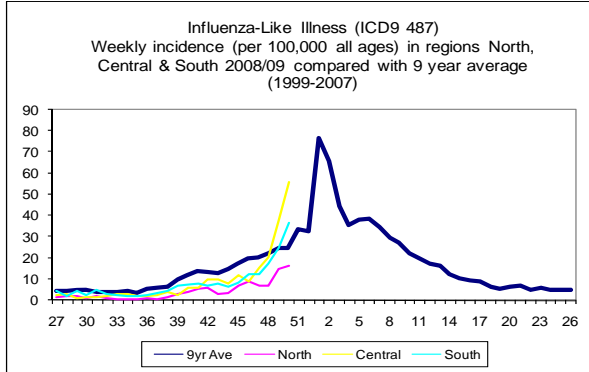
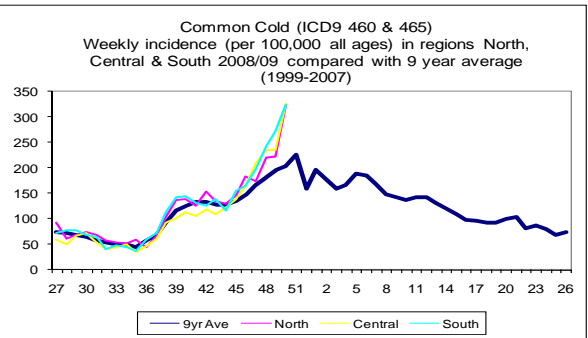
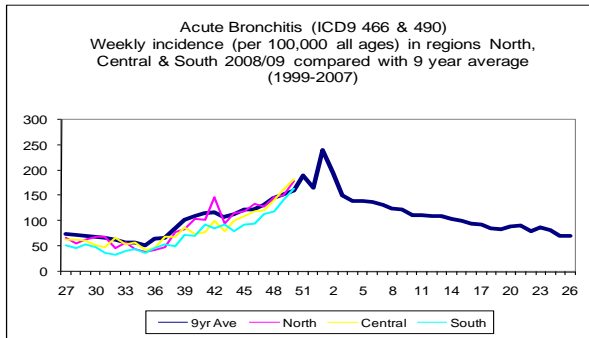
1. Water & Food Borne Disorders:



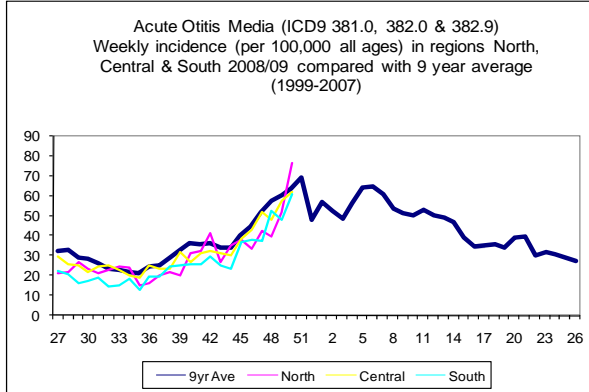
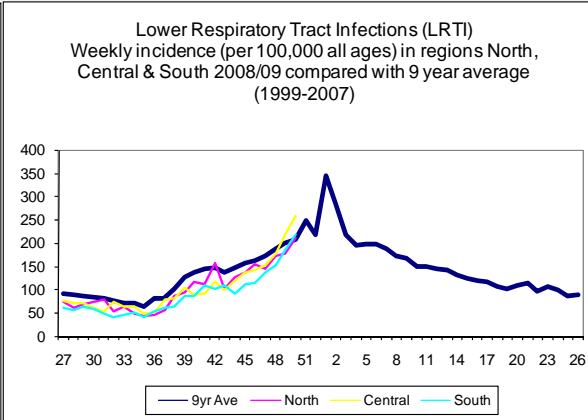
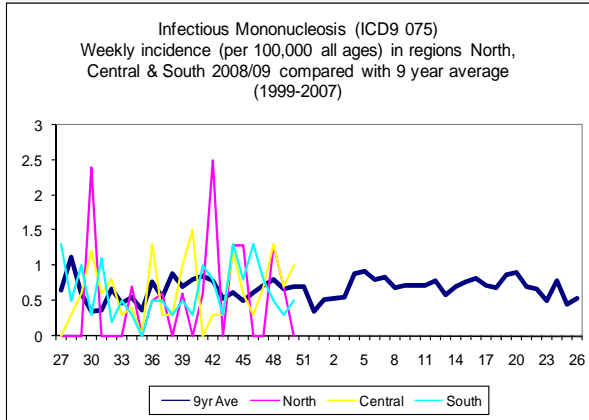
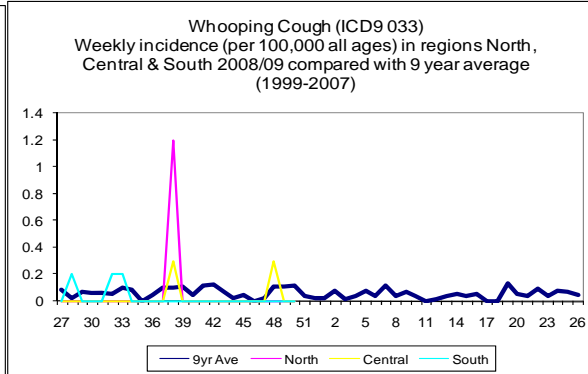
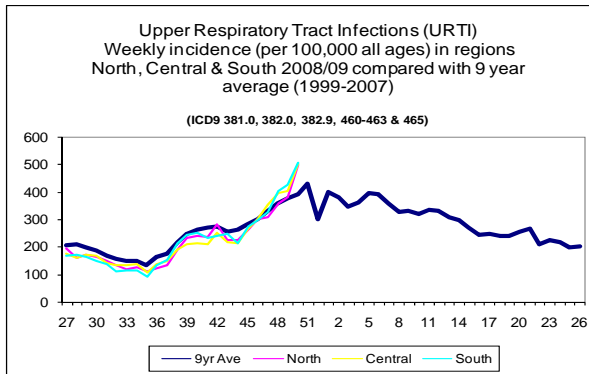
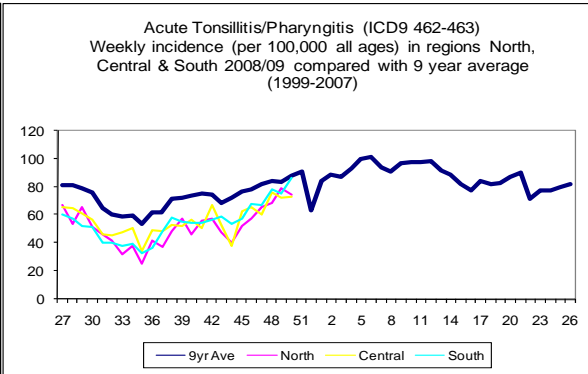
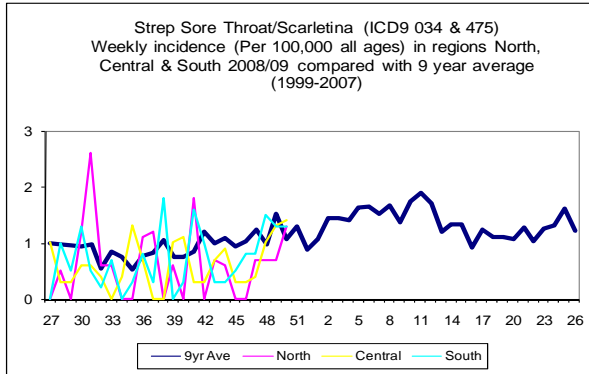
2. Environmentally Sensitive Disorders:



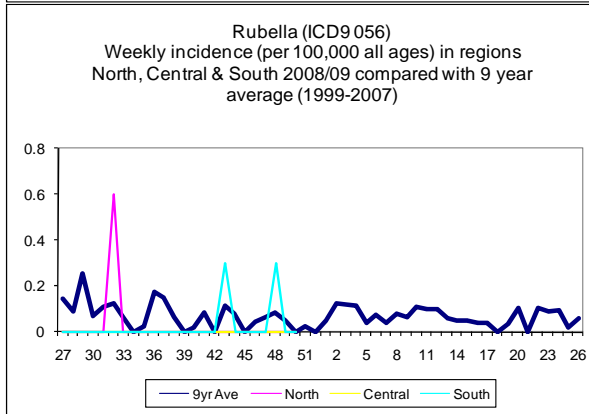
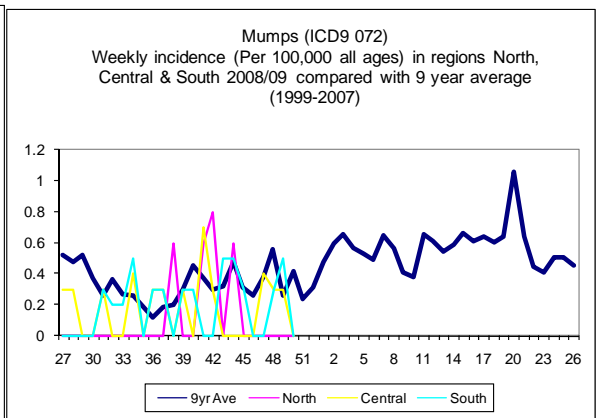
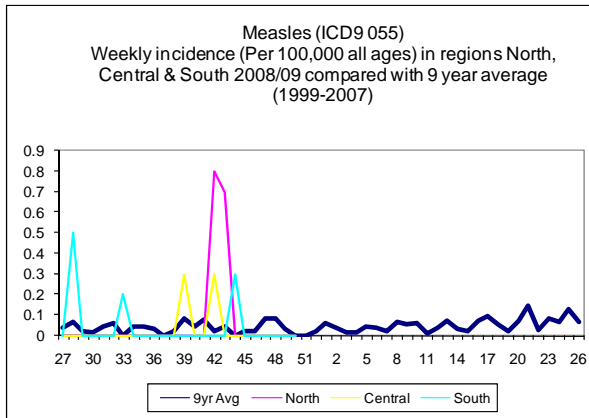
3. Respiratory Infections:



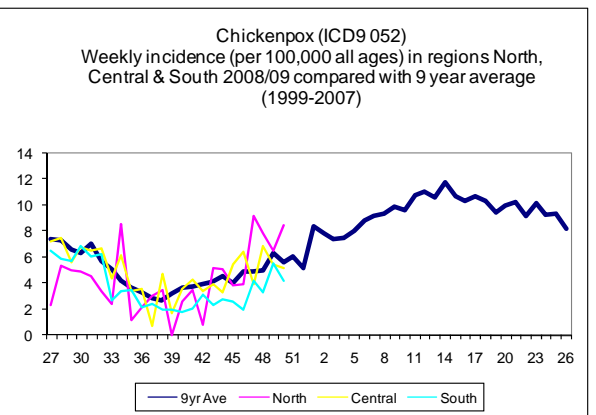
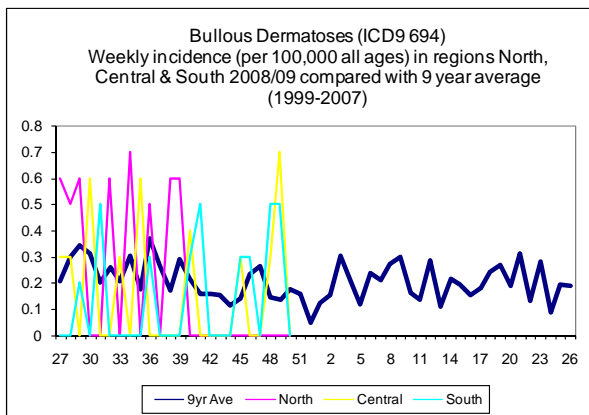
Respiratory Infections (continued):



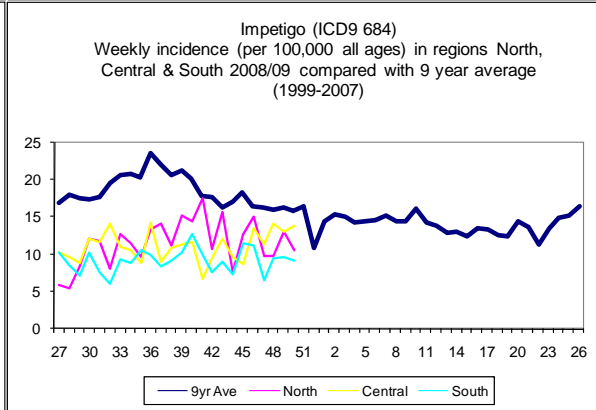
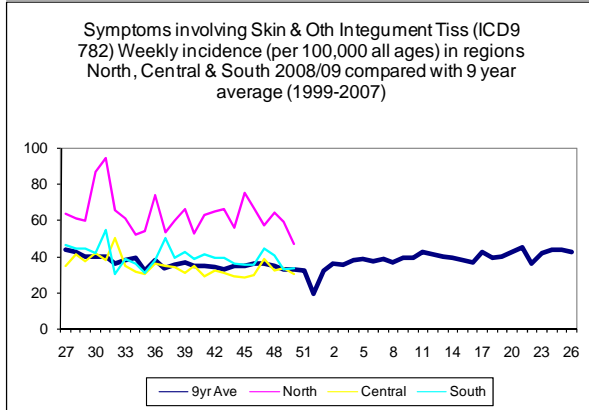
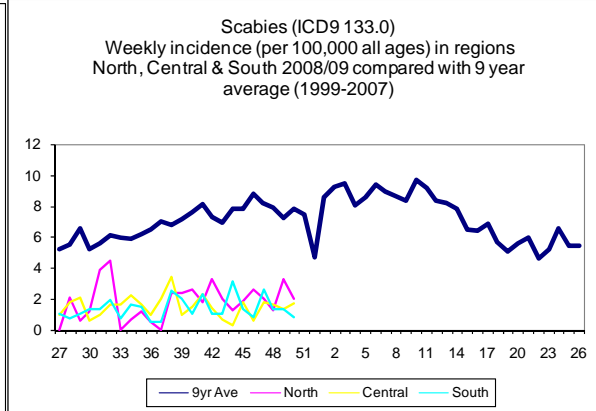
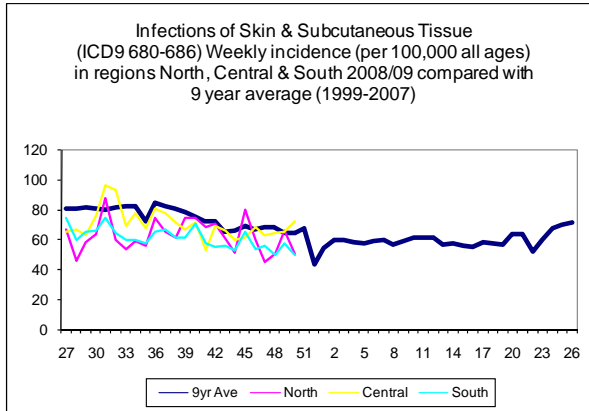
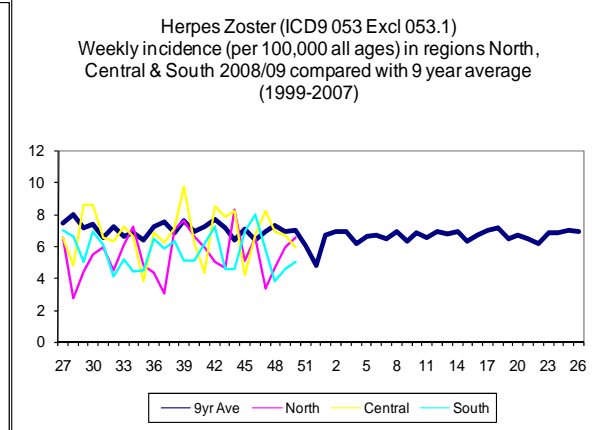
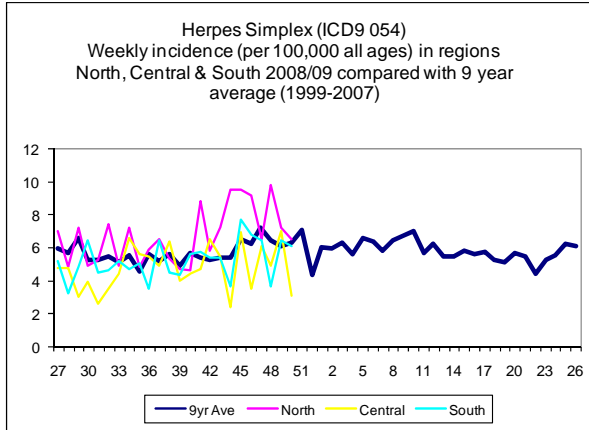
4. Vaccine Sensitive Disorders:



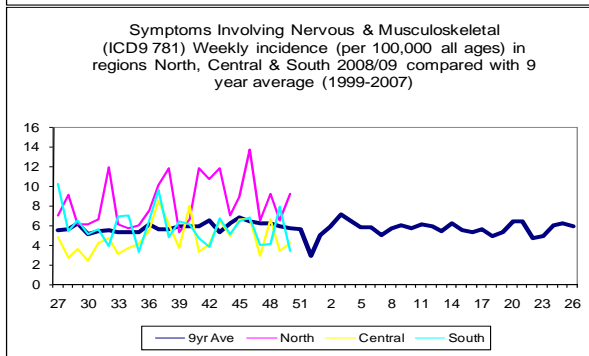
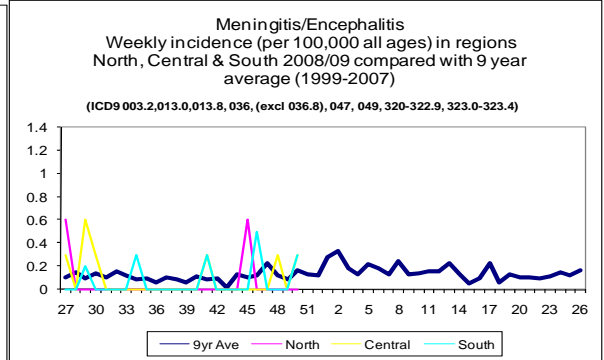
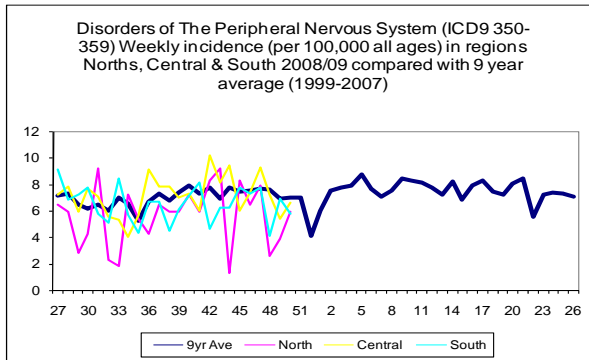
5. Skin Contagions:



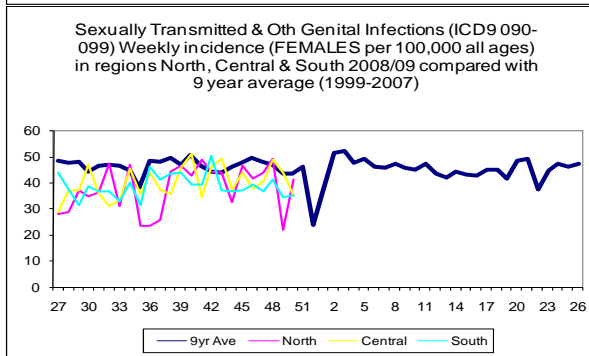
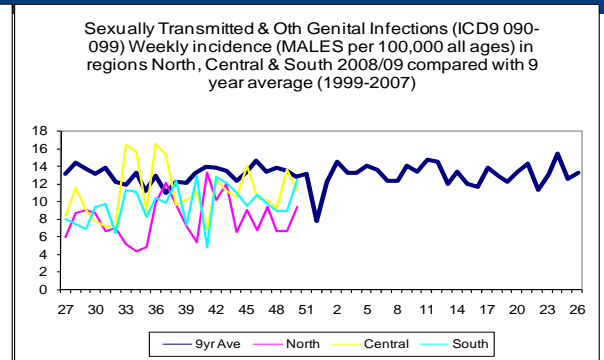
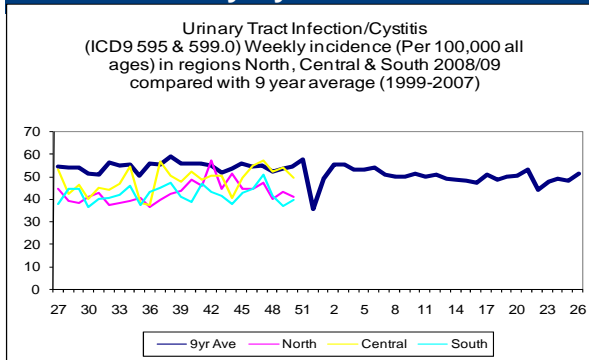
Skin Contagions (continued):



6. Disorders Affecting the Nervous System:



7. Genitourinary System Disorders:



**Birmingham Research Unit of the Royal College of General Practitioners
Weekly Returns Service**

8. Tabular Summary by Disease:

Week Beginning Ending	08/12/08 - 14/12/08 (provisional)		01/12/08 - 07/12/08		24/11/08 - 30/11/08		17/11/08 - 23/11/08	
	Rate:	Eps:	Rate:	Eps:	Rate:	Eps:	Rate:	Eps:
Allergic Rhinitis (477)	3.5	29	3.4	29	4.4	37	3.2	26
Asthma (493)	20.0	164	14.9	125	19.9	169	18.1	147
Bronchitis (466 & 490)	173.6	1422	151.0	1270	132.7	1125	119.0	968
Bullous Dermatoses (694)	0.0	0	0.5	4	0.4	3	0.0	0
Chickenpox (052)	5.4	44	5.7	48	5.4	46	5.0	41
Common Cold & URTI NOS (460 & 465)	324.8	2661	250.7	2109	236.0	2001	197.4	1605
Conjunctiva Disorders (372)	45.4	372	45.9	386	43.0	365	40.7	331
Herpes Simplex (054)	5.1	42	6.8	57	5.2	44	6.3	51
Herpes Zoster (053 Excl 053.1)	5.6	46	5.6	47	5.1	43	6.1	50
Impetigo (684)	11.1	91	11.5	97	11.2	95	8.9	72
Infectious Mononucleosis (075)	0.6	5	0.5	4	0.9	8	0.6	5
Influenza-Like Illness (487)	39.5	324	27.5	231	16.5	140	12.5	102
Intestinal Infectious Diseases (001~009)	19.6	161	19.5	164	21.3	181	16.5	134
Laryngitis & Tracheitis Acute (464)	13.3	109	13.3	112	11.6	98	9.5	77
Lower Respiratory Tract Infection (LRTI)	230.3	1887	193.8	1630	164.2	1392	143.3	1165
Measles (055)	0.0	0	0.0	0	0.0	0	0.0	0
Meningitis & Encephalitis	0.2	2	0.0	0	0.1	1	0.0	0
Mumps (072)	0.0	0	0.4	3	0.2	2	0.1	1
NonInfective Enteritis & Colitis (555~558)	7.3	60	9.3	78	8.3	70	6.6	54
Otitis Media Acute (381.0,382.0 & 382.9)	64.4	528	52.2	439	48.5	411	43.4	353
Peripheral Nervous System Dis (350~359)	6.1	50	5.8	49	5.0	42	8.2	67
Pleurisy (511)	1.6	13	0.5	4	1.2	10	0.9	7
Pneumonia and Pneumonitis (480~486)	2.4	20	1.4	12	2.1	18	1.5	12
Respiratory System Diseases (460~519)	728.5	5969	607.7	5111	564.2	4784	480.7	3909
Rubella (056)	0.0	0	0.0	0	0.1	1	0.0	0
Scabies (133.0)	1.3	11	1.7	14	1.4	12	2.2	18
Sinusitis Acute (461)	34.3	281	31.5	265	31.0	263	26.3	214
Skin & Subcutaneous Tiss Infections (680~686)	57.5	471	61.7	519	54.8	465	56.0	455
Strep Sore Throat & Scarl Periton Absc (034 & 475)	1.3	11	1.2	10	1.2	10	0.6	5
Symptoms Involving Nervous Musculoskeletal (781)	4.8	39	6.1	51	5.9	50	4.1	33
Symptoms Involving Respiratory & Chest (786)	55.2	452	56.1	472	51.3	435	49.6	403
Symptoms Involving Skin & Integument Tissue (782)	34.8	285	37.7	317	41.6	353	44.5	362
Tonsillitis & Acute Pharyngitis (462~463)	79.3	650	74.5	627	75.6	641	64.4	524
Upper Respiratory Tract Infections (URTI)	502.8	4120	409.0	3440	391.1	3316	331.5	2696
Urinary Tract Infection Cystitis (595 & 599.0)	43.3	355	44.1	371	45.1	382	52.1	424
Viral Hepatitis (070)	0.2	2	0.4	3	0.0	0	0.4	3
Whooping Cough (033)	0.0	0	0.0	0	0.1	1	0.0	0
Population at Risk:		819350		841080		847880		813175
Number of Practices:		83		85		86		82

Further Information:

The Weekly Returns Service (WRS) was established in 1964 at the Birmingham Research Unit of the Royal College of General Practitioners. The WRS monitors the number of patients consulting with new episodes of illness classified by diagnosis in England and Wales and provides weekly incidence rates per 100,000 population for these new episodes of illness. The WRS has archived all data since 1967 providing an unrivalled opportunity to look at long term trends of disease. The Unit, directed by Dr Douglas Fleming, is internationally renowned for its expertise on respiratory illnesses, particularly influenza and influenza-like illnesses.

This bulletin can be found at www.rcgp.org.uk/bru together with further information about the Birmingham Research Unit and a selection of publications and morbidity reports.

The bulletin can also be found at:

http://www.hpa.org.uk/infections/topics_az/primary_care_surveillance/default.htm

For further information about the work of the Unit or if you would like to be included on our email notification list please contact:

Joanne Miles
Unit Manager
Birmingham Research Unit of the Royal College of General Practitioners
Lordswood House
54 Lordswood Road
Harborne
Birmingham B17 9DB

Tel: +44 (0)121 426 1125

Fax: +44 (0)121 428 2084

Email: jmiles@rcgpbhamresunit.nhs.uk