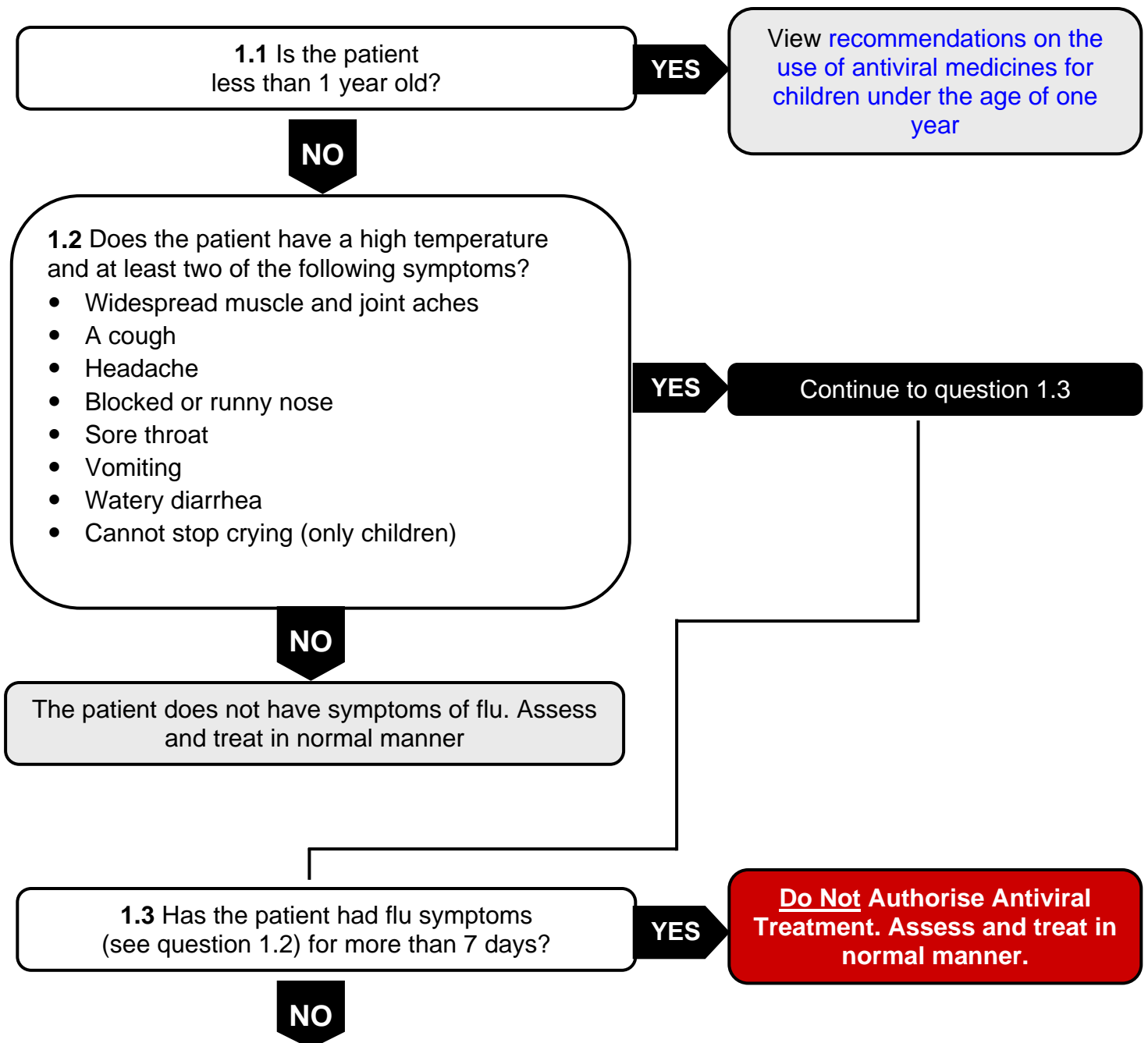


Flu Assessment and Authorisation of Antiviral Treatment

This is a GP-specific version of the Department of Health manual algorithm, developed by the Royal College of General Practitioners, and is **ONLY** for use by GPs themselves. It does not contain key information on patient safety which is vital for other users. The algorithm is intended as guidance to support GPs in exercising their clinical discretion.



1.4 Have these current flu symptoms (see question 1.2) been previously treated with Oseltamivir (Tamiflu®) or Zanamivir (Relenza®)?

YES

Do Not Authorise Antiviral Treatment. Assess and treat in normal manner.

NO

Continue to question 1.5

Continued from question 1.4

1.5 Is the patient between 1 & 5 years?

OR Is the patient over 65 years of age?

OR Does the patient have any of the following underlying conditions?

- Chronic lung disease or asthma which has been medically treated within the last 3 years
- Heart disease
- Diabetes or another metabolic disorder
- Chronic liver disease
- Cystic fibrosis
- Neurological conditions such as cerebral palsy, stroke, multiple sclerosis or muscular dystrophy
- Sickle cell disease
- Pregnancy
- Renal disease
- The patient is immunosuppressed

YES

AUTHORISE ANTIVIRAL TREATMENT

NO

Consider authorisation of antivirals bearing in mind whether the patient has a strong preference for active treatment.

End of assessment